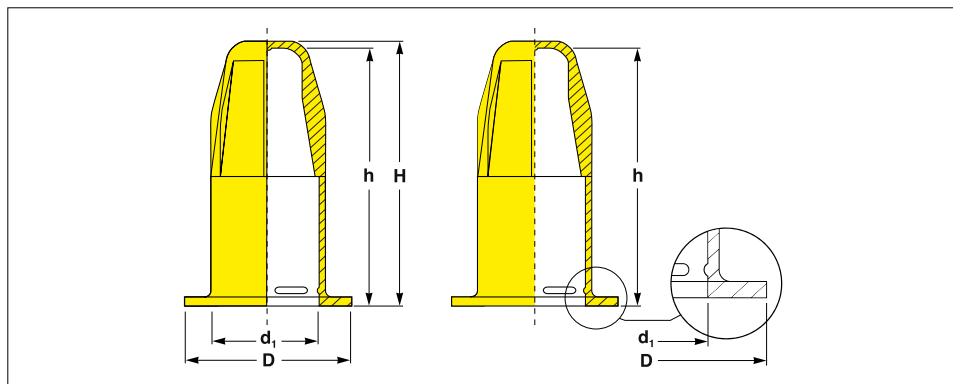


# QC – SAE Quick Connector Caps

Quick-release snap fit design

NEXT  
Express  
Service  
MORNING



## Material:

virgin-grade and recyclable  
LLD-PE

## Color:

yellow, optionally recycling blue

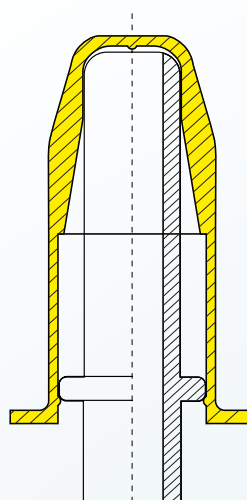
## CAPTOP® SAE Quick Connector Caps EP 214.

Captop EP 214 SAE Quick Connector Caps are designed to meet the high requirements and to protect the connection area of SAE Quick Connectors.

## Key features of the Captop EP 214 series

- **Innovative Design:** An engineering-based, grippy design to deliver excellent protection results in this specific application.
- **Robust construction:** Made from high-quality materials for long-lasting use.
- **Cost-effectiveness:** This Captop series also offers the best price-performance ratio on the market at consistently low prices.

**Premium Protec Price advantage**  
**Consistently low prices**



application example

All dimensions in mm

Applicable for SAE plugs Nominal width	d <sub>1</sub>	D	h	H	Reference No.
6.5	8.8	14.7	22.8	23.6	EP 214/ PP 6.35
8	10.9	14.7	24.7	25.7	EP 214/ PP 8
10	13.4	17.2	27.8	28.8	EP 214/ PP 10
12	16.5	20.3	29.6	30.6	EP 214/ PP 12
18	21.0	24.8	29.6	30.6	EP 214/ PP 18

Should your requirements not be shown please ask for a separate quotation.  
PROTEC products and specifications are subject to improvement and change without notice.

**PROTEC PLASTICS**

# QC – SAE Quick Connector Caps

Quick-release snap fit design

## TRIPLE ADVANTAGE of PROTEC CAPTOP®

**Quality.** Technology. Discover the superior quality and performance of the Captop EP 214 series. Whether you are looking for reliability or efficiency, this product meets all your industrial needs.

The Captop EP 214 series of SAE Quick Connector Caps is designed to meet the high demands and to protect the connection area of SAE Quick Connectors.

The protective caps clamp gently and without touching the sealing surface of the SAE connector to be protected. The protective caps are also equipped with a circumferential collar for easy and low-abrasion disassembly.

**Availability.** With over 400 million moulded components in stock we provide the fastest on time delivery service to all markets and industries.

**Protec Expertise.** We provide the best Product, Price and Service Benefits.



**Material:**  
virgin-grade and recyclable  
LLD-PE

**Color:**  
yellow, optionally recycling blue

**Special designs:**  
We develop additional dimensions,  
heat-resistant materials or alternative  
special designs tailored to  
your request.

We will be happy to advise you.

**P** Always the best solution.  
**P** Always at the best prices.